

## MAIN

LIVING ROOM 17 x 15  
DINING ROOM 13 x 10  
KITCHEN 13 x 9

Hardwood Floors in LR & DR - Parking Pad,  
Covered Back Porch & Fenced Back Yard

## UPPER LEVEL

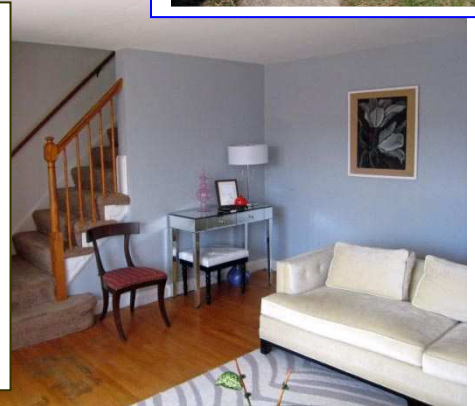
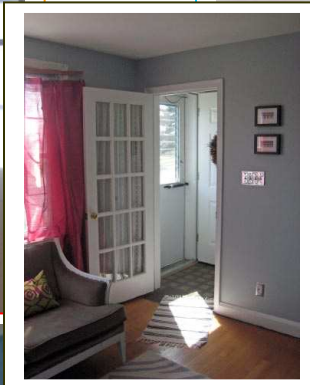
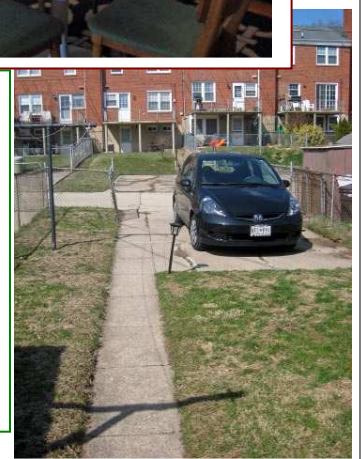
MASTER BEDROOM 13 x 12  
SECOND BEDROOM 14 x 10  
THIRD BEDROOM 11 x 9

Full Bath, Hardwood Floors in all BRs

## LOWER LEVEL

CLUB ROOM 17 x 15  
Half Bath, Club Bar, Laundry Facilities

- Central Air - Replacement Windows
- Energy Efficient Washer / Refrigerator
- 2 miles to Towson Town Center



Virtual Tour and Photo Album at [www.CharmCityRobert.com](http://www.CharmCityRobert.com)